

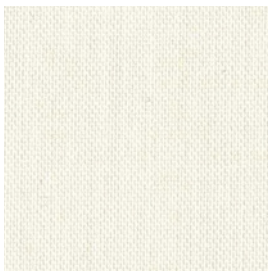
# WOOL MUSLIN, WORSTED YARN <sup>+</sup>

For Assessing the Colour Fastness

For tests according to:

- + ISO 105
- + ISO 11641
- + ISO 11642

## article 402



### Inspection Standard of article 402

<b>Parameter</b>	<b>specified value adjacent ISO 105-F01:2001-02-15</b>
<b>Appearance</b>	plain weave, wool-white
<b>Material</b>	according to ISO 105-F01:2001-02-15 wool 100 %
<b>Mass per unit</b>	according to ISO 3801 g/m <sup>2</sup> 125 ± 2
<b>Whiteness value</b>	according to ISO 105-J02 Y <sub>10</sub> 72 ± 2
<b>Aqueous extract</b>	according to ISO 3071 pH 7.5 ± 0.5

